

The Gumala Foundation Revenue

Yandi Land
Use Revenue



June QTR
\$14.4 Million

+

Investment
Revenue

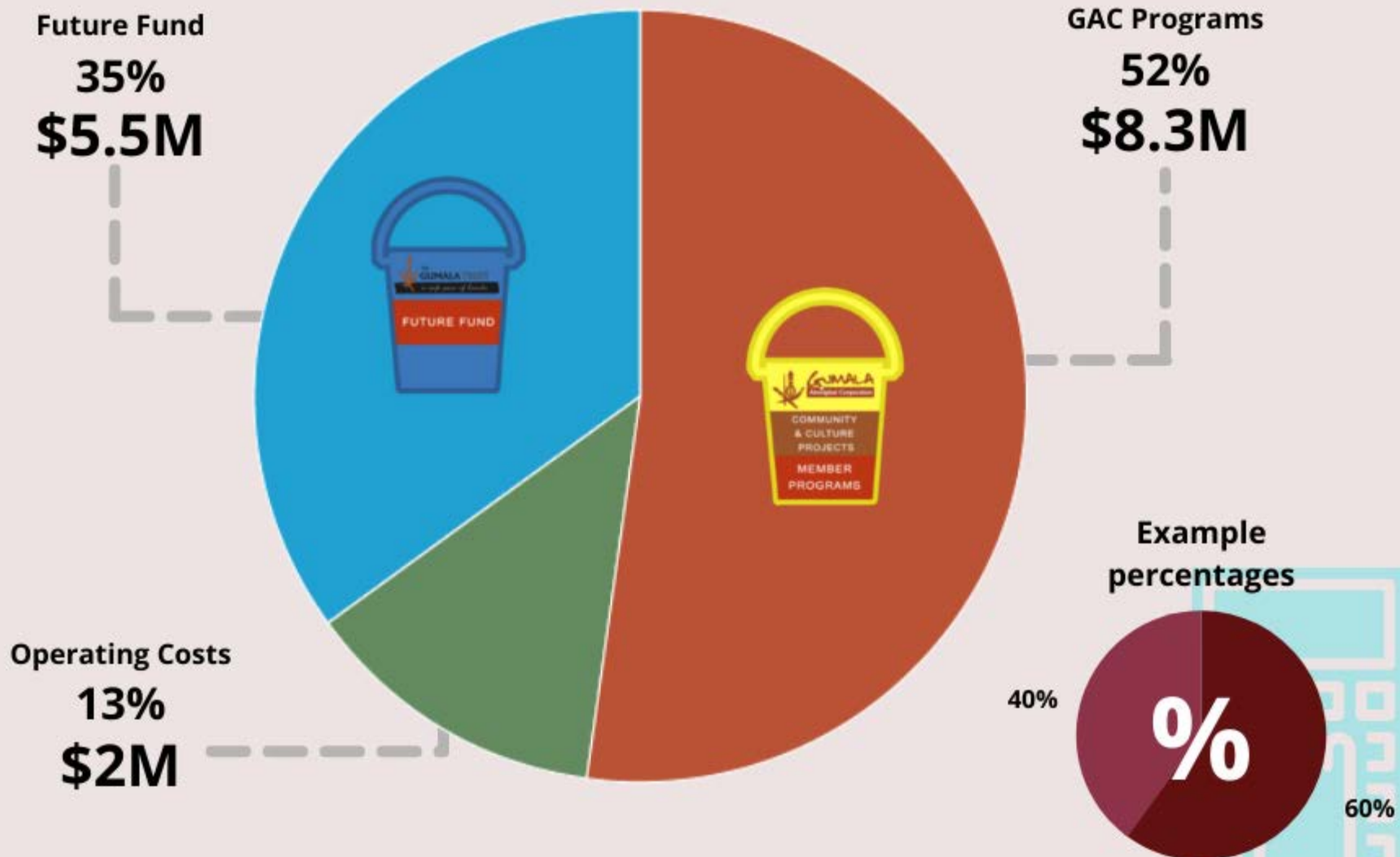


June QTR
\$1.4 Million

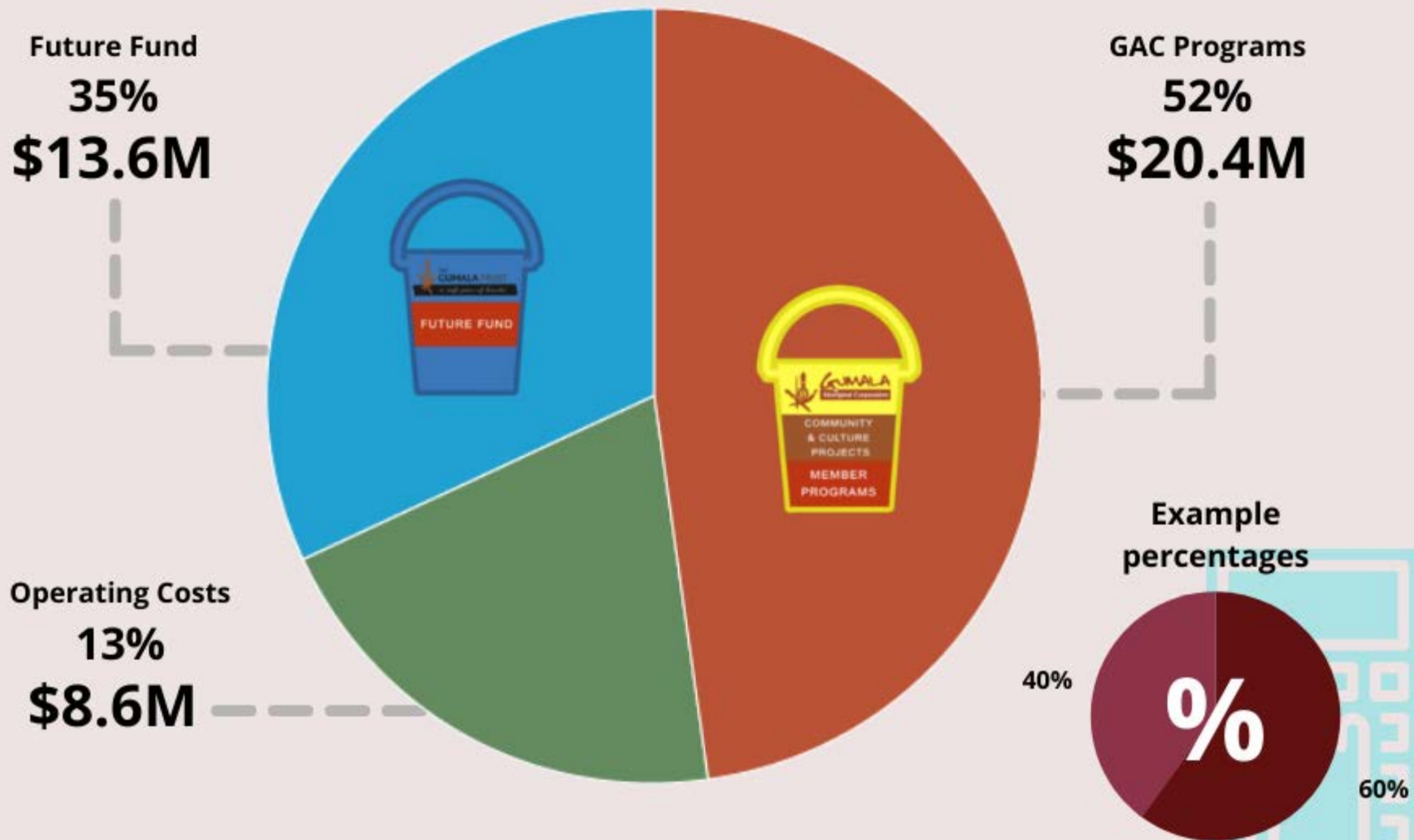
Total Revenue: 15.8 Million

The Gumala Foundation Funding Allocation

June QTR



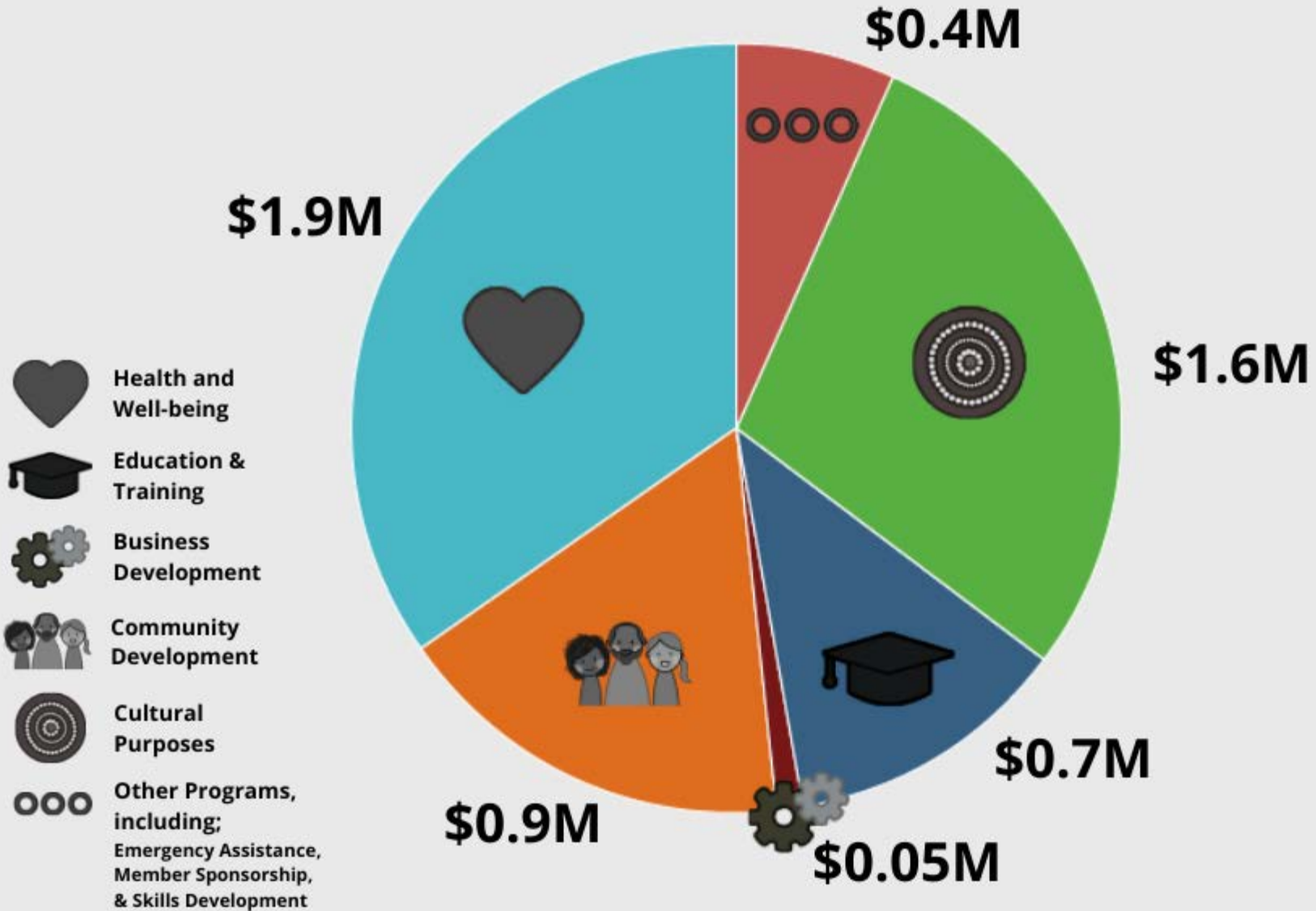
The Gumala Foundation Funding Allocation Year-to-Date



The Gumala Foundation

Apr-June Program Funding Spent

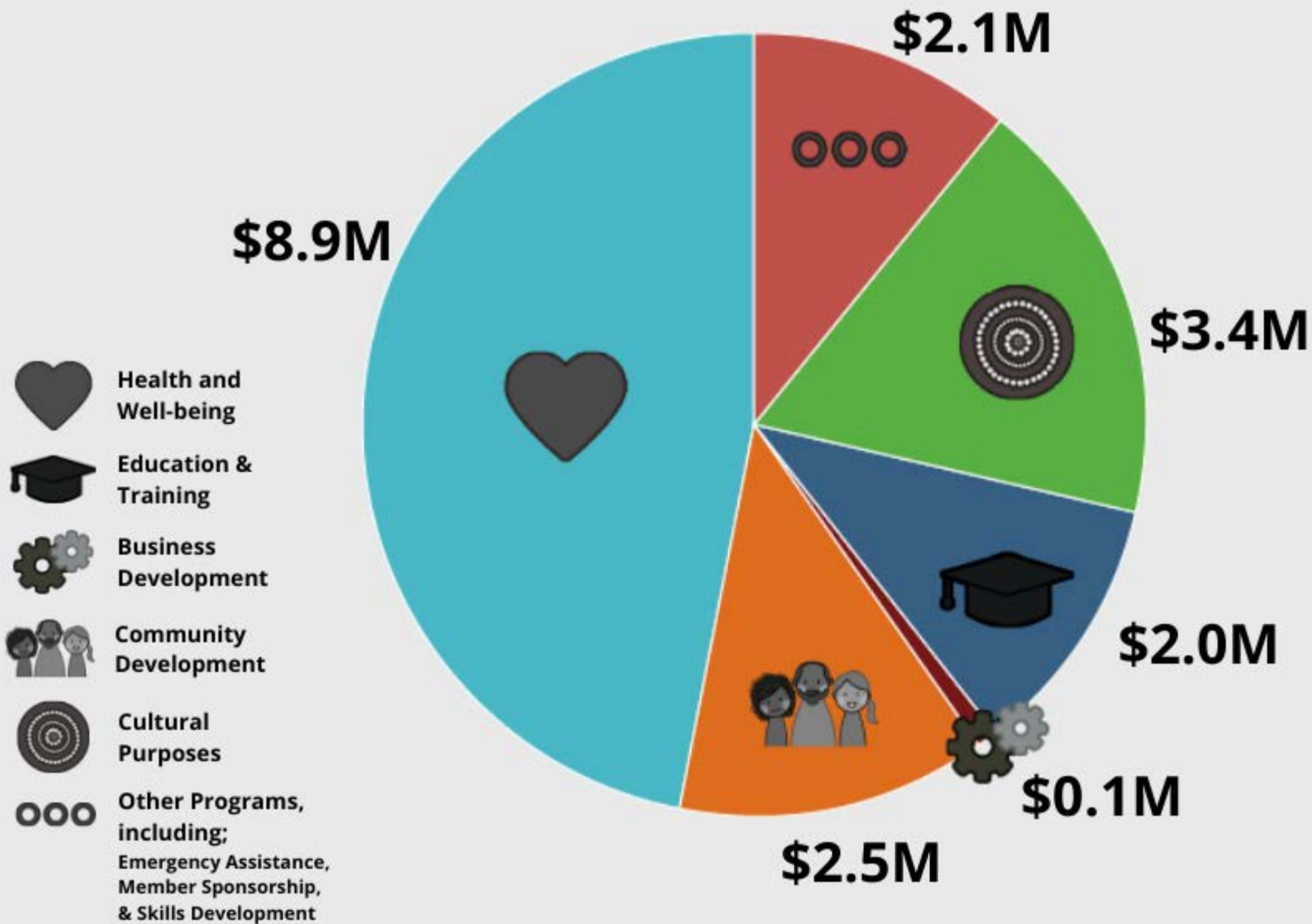
\$5.5M Spent



The Gumala Foundation

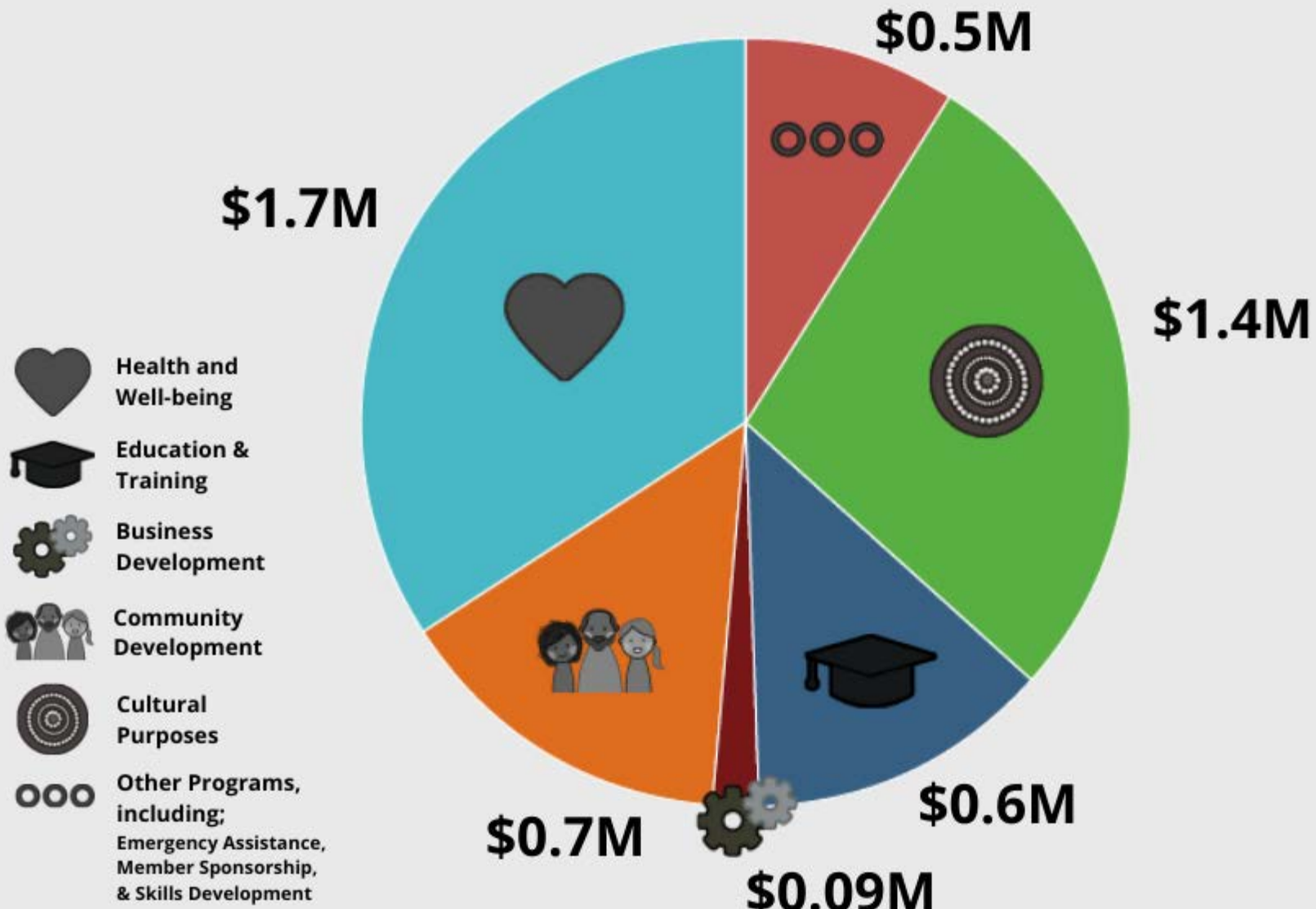
Year-to-Date Program Funding Spent

\$19.2M Spent



The Gumala Foundation Apr-June Program Funding Budget

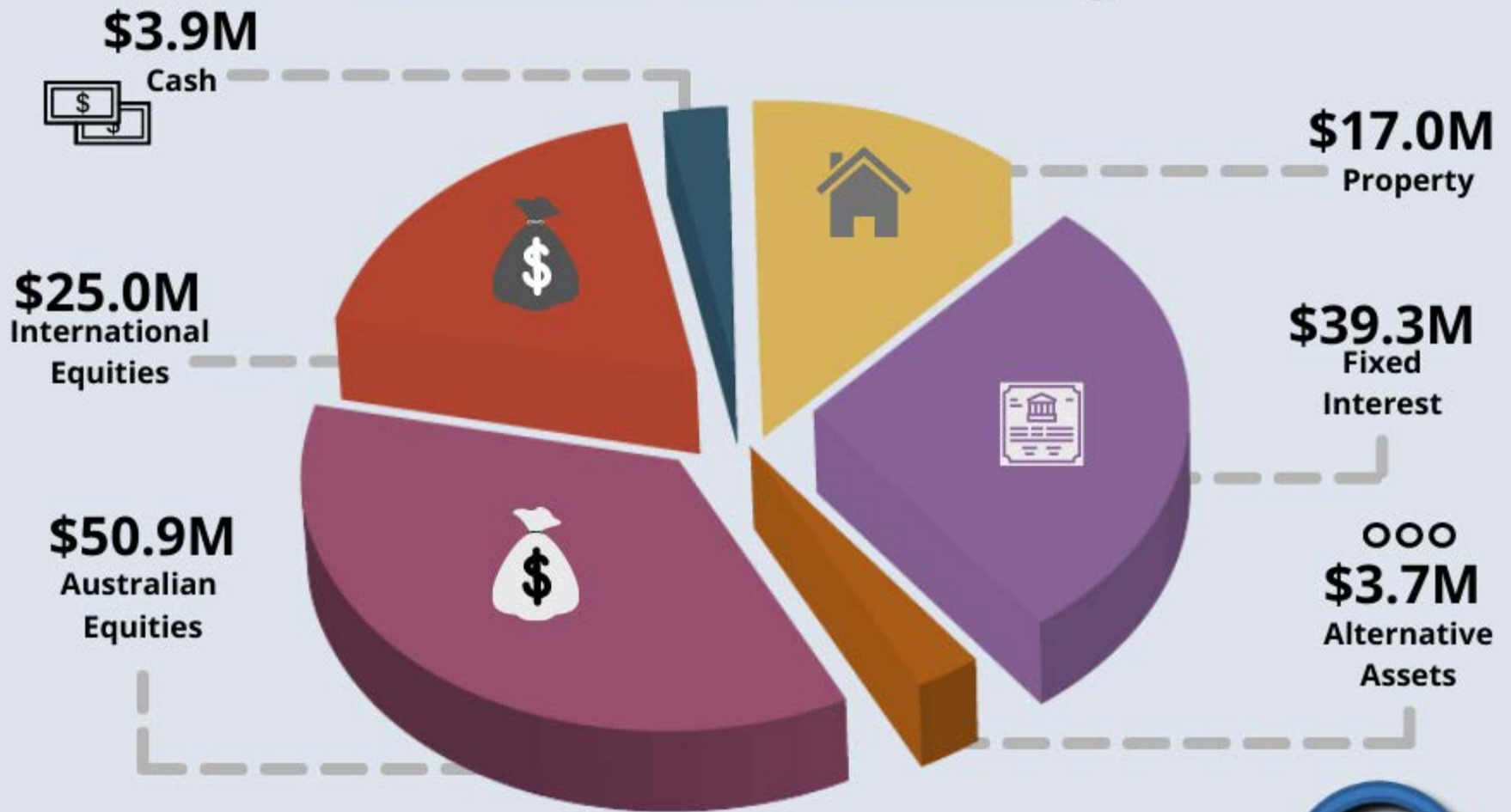
\$5.0M Allocated



The Gumala Foundation Future Fund Allocation Summary

Asset Class	Allocation	Within Range?
 Australian Equities	20 - 45%	
 International Equities	0 - 20%	
 Cash	0 - 5%	
 Property	20 - 45%	
 Fixed Interest	10 - 50%	
 Alternative Assets	0 - 5%	

Future Fund Investment Summary



Future Fund Investment Value: \$140M

